



# Petaluma Adult School



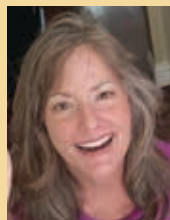
## Learning For Life!

Earn your High School Diploma or Equivalency  
Take English and Citizenship Courses  
Join our Healthcare Career Program  
Participate in Parent Education Classes  
¡Muchas clases son ofrecidas en español!

## August to December 2025

[petalumaadultschool.org](http://petalumaadultschool.org)

# A Message from the Principal



Petaluma Adult School is here for you.

We offer free English as a Second Language and Citizenship classes to adults from a variety of backgrounds and countries. While you take classes to learn English, we can provide you with free childcare if you need it. Students in these classes form trusting bonds with each other and their teachers – making learning to speak English fun.

Petaluma Adult School can help you earn your high school diploma or its equivalency. Whether you need just a couple of classes or many, we can help you get started and support you on your journey towards success. Our students range in age from 18 to 60 or older. It's never too late to boost your earning potential by completing your diploma. Our diploma equivalency test preparation classes are offered at flexible hours, in both English and Spanish.

Our Community Education classes are available at a low cost to any adult throughout Sonoma and the contingent counties. Do you want to join our adult band, or get healthier through a variety of exercise classes or lap swimming in our pool, or learn a new craft such as woodworking, knitting, or painting?

There are so many things for you to discover with Petaluma Adult School. Enjoy this brochure and call us if you have any questions at 707-778-4633.



Michelle Devereaux  
Principal, Petaluma Adult School

## Un Mensaje de la Directora

¡Petaluma Adult School está aquí para ustedes!

Ofrecemos clases gratuitas de inglés como segundo idioma y clases de ciudadanía para adultos de todos países y culturas. Mientras toma clases de inglés podemos proveer con una guardería gratis si la necesita. Los estudiantes en nuestras clases hacen amistades con los otros y sus maestros - ¡es divertido aprender el inglés!

Petaluma Adult School le puede ayudar a terminar su diploma de la secundaria o su equivalencia. Si necesita solo unas clases para ganar el diploma o muchas, podemos ayudarle empezar y apoyar su camino al éxito académico. Tenemos estudiantes que tienen 18 años y estudiantes que tienen 60; ¡educamos a todos! Todavía puede terminar su diploma y ganar más. Nuestras clases de equivalencia del diploma se ofrecen en horas flexibles en inglés y español.

Nuestras clases de Educación Comunitaria están disponibles a bajo costo a todos los adultos del Condado de Sonoma y los condados contiguos. Quiere participar en nuestra banda, clases de ejercicio o natación, o aprender un arte nuevo como carpintería, tejido de punto, o pintura?

Hay muchas cosas para descubrir con Petaluma Adult School. Disfrute este panfleto y llámenos si tiene cualquier pregunta al 707-778-4633.



Michelle Devereaux  
Directora, Petaluma Adult School

# Table of Contents

Message from the Principal..... 2

Holidays/No class days..... 3

**Community Education Classes**

Arts..... 4

Arts/Exercise..... 5

Exercise .....6

Language/Music/Nature/Personal Interest ..... 7

Highlights ..... 8

**State Supported Classes**

Workplace Skills/Free Typing Certification..... 9

Parent and Child Education/Family Resource Center ..... 10

Free English as a Second Language/Citizenship/  
Clases de Inglés y Ciudadanía ..... 11

Free High School Equivalency Test Prep ..... 12

Free High School Diploma ..... 13

Microsoft Office Certificate..... 13

**Important Information**

PCS and PAS Staff/PCS Ad..... 14

Site Locations/School Policies ..... 15

## FALL 2025 HOLIDAYS / NO CLASS DAYS

September 1	Labor Day Holiday
November 11	Veteran’s Day Holiday
November 24-28	Fall Break
December 22 - January 2	Winter Break

### No Fees Policy

No fees of any kind are collected from students for participation in the Workforce Innovation and Opportunity Act (WIOA) Title II (Public Law 113-128) or California Adult Education Program (CAEP) classes.

At Petaluma Adult School, no fees are collected for High School Diploma, HiSET test preparation, Citizenship (The United States Immigration Service (USCIS) requires the payment of a processing fee for its Citizenship application (USCIS Form N-400), English as a Second Language classes and most K-12 Success/Parent Education classes.

Fees may be charged for short-term CTE, the Nursery School Cooperative and other classes offered by programs for which Petaluma Adult School is the LEA.



## Gouache Painting

Barbara Golden

This beginner and advanced beginner zoom class covers the basics of gouache, teaching techniques for painting beautiful landscapes, flowers, and animals. It's great for those with some experience in watercolors or acrylics, as gouache is similar in beauty but more forgiving than acrylics. Please bring the following supplies to class: gouache paint, paintbrushes, art pad/canvases, smooth board, blue painter's tape, pencil, eraser, ruler, rag, cup, and 0.5 black micro ink pen. Online Zoom format. Maximum = 15 (10 classes)

# 821120

\$200

WED 9/03-11/19

5:30-7:30pm

Virtual Zoom



## Introduction to Woodworking Through Kitchen Tools

Scott Granger

This step-by-step introductory class is for anyone with little or no experience with woodworking tools. All students must attend the first class and should commit to attending each class to ensure the projects are completed. Students will make three useful tools with the kitchen in mind: a serving tray, a book/iPad/recipe stand, and a pizza peel. This class is also perfect for students who have completed our traditional Introduction to Woodworking class and would like more experience in the shop before joining our Experienced group. Please bring a positive attitude, pencil and paper, ear and eye protection, and closed toe shoes to each class. Maximum = 12 (10 classes)

# 805300

\$250

TU 9/02-11/04

6:00-9:00pm

PHS Woodshop, 201 Fair Street



## Woodworking for Experienced Folk

Scott Granger

Most students in this class will have taken the beginner course for woodworkers, but others who have knowledge and experience with woodworking machines, tools, and processes are welcome to enroll, too. Please contact the instructor, Scott Granger, at [sgranger@petk12.org](mailto:sgranger@petk12.org) to make sure your skill level is appropriate for you to attend this class before enrolling. Available machines include table saws, radial arm saws, sliding compound miter saws, band, saw, jointer, planer, lathe, and many portable power tools. Bring some good plans for your project, eye and ear protection, pencil, paper, and closed shoes. For the most part, you will need to supply your own lumber - the teacher will have glue, sandpaper, and some screws and finishes. Maximum = 12 (10 classes)

# 805100

\$250

TH 9/04-11/06

6:00-9:00pm

PHS Woodshop, 201 Fair Street

**ATTENTION!** For all woodworking classes, the instructor monitors that safety rules are followed completely by all students. Students who do not follow the safety rules will be dropped from the class and not allowed to re-enroll. A \$20 non-refundable lab fee is included in the registration fee to cover machine maintenance. All students must attend the first class to review safety procedures.

## Knitting Basics

Kendal Dazey Pratt

Come learn the basics of knitting by knitting washcloths! The class will cover the basics, such as: casting on, the knit stitch, and binding off. For those ready for a challenge, the purl stitch, and working in basic patterns. Students will learn at their own pace, with individualized support as needed. Walk away with a usable project, and the skills to make many more! A set of size 8 needles and one skein of cotton worsted weight medium yarn is included in the class registration fee. These materials are a \$15 value and non-refundable. Maximum = 8 (3 classes)

# 801300 \$65

MO 9/08-9/22 6:30-8:00pm

SAHS, Room 1, 500 Vallejo Street

## Knitting for Beginners - Next Stitches

Kendal Dazey Pratt

Come learn the next stitches for beginner knitters! If you've mastered the knit stitch, and know or are ready to learn to purl-join this class to learn increases, decreases, knitting in the round, and cables. 3 projects will be used to teach these skills: a diagonally knit washcloth, a ribbed hat, and a cabled mug cozy. Please bring yarn and needles to the first class for the washcloth (cotton or acrylic yarn in medium worsted weight, and size 7 or 8 needles of choice). Maximum = 8 (4 classes)

# 831400 \$75

MO 9/29-10/20 6:30-8:30pm

SAHS, Room 1, 500 Vallejo Street

NEW

## Knitting Workshop

Kendal Dazey Pratt

For beginner and intermediate knitters, come work on building comfort with current skills, and learning new skills. Each class will include free work time, with opportunity to get individual support on works in progress, and group discussion on different aspects and skills of knitting. Bring your project (or prospective projects) to each class. Maximum = 8 (4 classes)

# 841310 \$75

MO 10/27-11/17 6:30-8:30pm

SAHS, Room 1, 500 Vallejo Street

## MASHUP Conditioning

Sheila Siragusa

This class includes 15 minutes of agility/strength (with dumbbells), 15 minutes of cardio (at your own pace), and 15 minutes of balance/core. Come work on fitness while having fun! Please bring 3, 5, or 8 lb. dumbbells and mat. Maximum = 20 (7 classes)

# 833000 \$75

TH 9/11-10/23 5:30-6:30pm

SAHS, Multi, 500 Vallejo Street

NEW

## Move, Breathe, Center ~ Yoga and Mindfulness Meditation for Diverse Abilities

Bhavana Mody

Join Bhavana Mody, as she leads you through a weekly mindfulness practice. Each class will be an integration of 3 parts: 1) gently moving the body to release stress, 2) breathing techniques to energize, focus and/or calm the body and mind 3) mindfulness meditation, to help center, focus and calm the mind. Students can participate seated in a chair the entire time or can do some of the movement, standing. This class is inclusive to anyone and everyone and is an excellent practice for those with diverse abilities. Maximum = 20 (5 classes)

# 543440 \$95

TU 9/02-9/30 5:30-6:30pm

MCD, Multi, 421 S. McDowell Boulevard

LAP SWIM

### PETALUMA ADULT SCHOOL

**08.25** MONDAY, 5:30 A.M. - 7:00 A.M.  
8/18, 8/25, \$38

**09.25** MONDAY, 5:30 A.M. - 7:00 A.M.  
9/8, 9/15, 9/22, 9/29, \$56

**10.25** MONDAY, 5:30 A.M. - 7:00 A.M.  
10/6, 10/13, 10/20, 10/27, \$56

**11.25** MONDAY, 5:30 A.M. - 7:00 A.M.  
11/3, 11/10, 11/17, \$42

**12.25** MONDAY, 5:30 A.M. - 7:00 A.M.  
12/1, 12/8, 12/15, 12/29, \$56

PHS POOL, 201 FAIR STREET





## Move, Breathe, Center ~ Yoga and Mindfulness Meditation for Stress Reduction

Bhavana Mody

Join Bhavana Mody, as she leads you through a weekly mindfulness practice. Each class will be an integration of 3 parts: 1) gently moving the body to release stress, 2) breathing techniques to energize, focus and/or calm the body and mind 3) mindfulness meditation, to help center, focus and calm the mind. Students can participate seated in a chair the entire time or can do some of the movement, standing. Bhavana will send articles and lead discussions on topics such as "chronic stress," and "vagus nerve." This class is an excellent way to decompress after a busy day, to connect with yourself and with others. Maximum = 20 (6 classes)

# 5434450 \$115

TU 10/07-11/18 5:30-6:30pm

MCD, Multi, 421 S. McDowell Boulevard



Photo taken by Jeanette Vonier

## Transform Your Posture; Protect Your Back

Dana Davis

Common guidelines for good posture can cause stress in the spine and wear and tear on the joints. Learn how to transform your posture to protect your back, prevent injuries, and lengthen your spine. Discover how people from less industrialized parts of the world maintain good posture into their old age. Benefits include increased flexibility, improved balance, and greater body awareness. Maximum = 15 (1 class)

821500 \$48

WE 9/03-9/03 5:30-8:30pm

PJHS, Multi, 700 Bantam Way

**Learn More  
and Register**



Photo by Lisa Rose

## Yoga for Posture & Spine Health

Dana Davis

Learn healthy postural guidelines based on more than 40 years studying populations without back pain who stay straight into their old age. We'll integrate these guidelines into yoga poses to increase balance, flexibility, strength, and coordination. These alignments help reduce back and joint pain and improve posture naturally. Please bring a yoga mat, 2 yoga blocks, yoga strap, and 2 blankets or towels. Maximum = 15 (4 classes)

# 821300 \$59

WE 9/10-10/01 6:00-7:15pm

PJHS, Multi, 700 Bantam Way



Photo taken by Jeanette Vonier

## Yoga for Posture & Spine Health ~ Gentle

Dana Davis

In this gentle yoga class, you will learn healthy postural guidelines based on more than 40 years of studying populations without back pain who stay straight into their old age. We'll integrate these guidelines into yoga poses to increase balance, flexibility, strength, and coordination. These alignments help reduce back and joint pain and improve posture naturally. Chairs will be available for student use. Please bring a yoga mat, 2 yoga blocks, yoga strap, and 2 blankets or towels. Maximum = 15 (4 classes)

# 821400 \$59

WE 9/10-10/01 4:30-5:45pm

PJHS, Multi, 700 Bantam Way

### Build on Your Spanish Skills with Practical Conversations!

Oscar Guajardo

This course is designed for students with basic Spanish vocabulary who are ready to build on that foundation. Focused on practical vocabulary and conversational skills, the class uses everyday scenarios to help you speak with more confidence and ease. The focus will be on improving pronunciation, confidence, and fluency in everyday interactions. Get ready to speak more Spanish, participate in guided dialogues, and enjoy learning through engaging, practical situations. This class is open to beginners willing to jump into conversations. Maximum = 20 (10 classes)



# 844200 \$165  
 TU 9/2-11/4 6:00-8:00pm  
 KJHS, Room TBA, 800 Riesling Road



### Petaluma Community Band

Arlene Burney

The Petaluma Community Band is an adult wind and percussion ensemble. Participants should have played with an advanced high school and/or college band, feel comfortable sight-reading music at an advanced high school level, and be willing to practice at home. Participants should have their own instrument, but percussion equipment and sometimes tubas and string basses are provided. Please bring your instrument to the first class. Interested new members must contact Arlene Burney at [pcband@sonic.net](mailto:pcband@sonic.net) before registering, to check on available openings for certain instruments. Please check out [www.petalumacommunityband.org](http://www.petalumacommunityband.org) for more information. Maximum = 60 (10 classes and 1 concert)

**Our spring concert is 12/15/25.**

**No class 10/20/25.**

# 880000 \$40  
 MO 9/22-12/15 7:00-9:00pm  
 CGHS, Room G1, 333 Casa Grande Road

### Birds of Sonoma County

Lisa Hug

Learn about the birds that inhabit Sonoma County while exploring local natural areas. We will have two Thursday in-person PowerPoint presentations. One features the local waterbirds and the other features the local landbirds. We also have four Saturday field trips to various beautiful areas in the county. This is a fun way to discover the presence of egrets, hawks, ducks, sandpipers and many more types of birds that are locally present. There may be additional park entrance fees for some field trips. (2 in-class meetings, 4 field trips) Maximum = 15

# 850500 \$90  
 TH 9/18 & 10/2 6:30-9:00pm  
 SAT 9/20, 9/27, 10/4 & 10/11 8:30am-12:30pm  
 SAHS, Room 9, 500 Vallejo Street  
 # 850500-1 \$90  
 TH 10/23 & 11/6 6:30-9:00pm  
 SAT 10/25, 11/1, 11/8 & 11/15 8:30am-12:30pm  
 SAHS, Room 9, 500 Vallejo Street



### Detecting and Avoiding Financial Fraud



Kim G. Bruno

Have you been the victim of a financial fraud? Are you worried about being a victim in a financial fraud? Would you like to hear how you might avoid being a victim? This course will provide a background on the types of fraud that you may encounter and to be more skeptical of potential investments, demands for payment, or other common fraudulent schemes. Also, the course will provide an overview of federal, state and local government resources you can call upon for assistance, either in attempting to recover funds lost to a scheme and/or helping authorities mitigate or stop the fraud schemes. Finally, the course will provide materials that will be resources you can use after leaving the class. Maximum = 20 (2 classes)

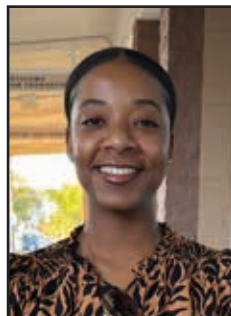
# 860300 \$40  
 TU, TH 9/16-9/18 6:00-7:00pm  
 PHS, Room C1, 201 Fair Street

## Highlights

### California Adult Education Award

We are so excited to share with the community that one of our adult education students, Carine Gabriel, was selected as a recipient of the California Adult Education Students Succeed award. This award, given annually, honors adult learners who have used their education to better themselves, their families, and their community. Carine was recognized for her work as a Peer Educator and Production Cook with Sonoma Family Meals, where she helped translate for other students, as well as assist them to expand their knowledge in the kitchen. Carine also volunteers with Blue Zones Petaluma and teaches a Zumba class for Petaluma Adult School. She will be traveling to Anaheim to receive this honor from the California Adult Education Program in September - we are so proud of you Carine!

Con mucho orgullo compartimos con nuestra comunidad que una de nuestras estudiantes de educación adulta, Carine Gabriel, fue elegida como recipiente del premio California Adult Education Students Succeed. Este premio reconoce a estudiantes adultos que han usado su educación para mejorar ellos mismos, sus familias, y sus comunidades. Se reconoce a Carine por su trabajo como maestra colega y cocinera de producción con Sonoma Family Meals, donde ayuda a traducir por los otros estudiantes, y ayudarles a aprender más en la cocina. Carine también trabaja como voluntaria con Blue Zones Petaluma y enseña una clase de Zumba para Petaluma Adult School. En septiembre Carine va a ir a Anaheim para recibir este premio del California Adult Education Program - ¡felicitaciones Carine!



**Carine Gabriel**



**Magaly Alcalá Trujillo**

It is with great joy that we announce that one of Petaluma City Schools employees has graduated from Petaluma Adult School! Magaly Alcalá Trujillo, who works at Valley Vista Elementary School as a custodian, completed her high school equivalency in May. Magaly had to pass five tests in reading, writing, math, social studies, and science in order to earn her high school equivalency. Magaly plans to continue working on her education to one day fulfill her dream of becoming a teacher. Congratulations, Magaly - we are so proud of you!

Con mucha felicidad anunciamos que una de nuestras empleadas de Petaluma City Schools se ha graduado de Petaluma Adult School! Magaly Alcalá Trujillo, quien trabaja en la escuela Valley Vista como custodia, recibió su equivalente de la secundaria en mayo. Ella tenía que pasar cinco exámenes en lectura, escritura, matemáticas, estudios sociales, y ciencias para recibir su equivalente. Magaly quiere continuar sus estudios para que se realice su sueño de ser maestra. Felicitaciones Magaly - ¡estamos muy orgullosos de ti!

### Always wanted to teach something you love doing?

Petaluma Adult School is looking for instructors. Please email your idea to Office Manager, Erika Schiefer, at [eschiefer@petk12.org](mailto:eschiefer@petk12.org)

### PAS FUN FACTS: DID YOU KNOW???

- The age range of our students is from 3 month-old babies to 87 years of age.
- Our students come from over 25 different countries.
- We have more than 2000 enrolled students.
- We have the only Family Resource Center in Petaluma.
- Six of our staff members past and present have gotten their Citizenship through our program.
- Scholarships are available for CalRegionl pathways and MS Office Workplace Certificates.
- Two current staff have earned their High School Equivalency.





**BAY AREA ROOFING  
AND WATERPROOFING  
APPRENTICESHIP PROGRAM**  
420 Leisure St., Livermore, CA 94551  
(510) 628-3650  
info@rwprogram.com



**SONOMA COUNTY JOB LINK**  
2227 Capricorn Way Suite #100  
Santa Rosa, CA 95407  
(707) 565-5550  
www.joblinksonomacounty.com



**Petaluma Adult School**



**CAL REGIONAL**

**BECOME A NATIONALLY CERTIFIED**

## **HEALTHCARE PROFESSIONAL**

2 Locations:

**Petaluma  
and  
Santa Rosa**

CALRegional, in partnership with Petaluma Adult School, provides busy adults with fast and affordable healthcare training. Programs include the National Certification required for employment in the field.

**Interest-free payment plans** are available, and everyone qualifies!



### **Programs:**



**MEDICAL ASSISTANT**



**PHLEBOTOMY  
TECHNICIAN**



**BILLING & CODING  
SPECIALIST**



**EKG TECHNICIAN**

**JOIN A FREE ONLINE INFO SESSION**



**CAL REGIONAL**.com

800-927-5159



## **Petaluma Adult School offers FREE typing test certificates**

### **Typing Certificate**

Please call Erika at (707) 778-4633 to book your 30-minute typing test appointment. It includes warm up, pre- and post-tests, and typing certificate. The test with the highest words per minute will be printed after the session. There is no fee and please bring valid California ID.



Register online at [www.petalumaadultschool.org](http://www.petalumaadultschool.org)

CRECIENDO JUNTOS  
"GROWING TOGETHER"

Petaluma Adult School

## PARENT EDUCATION

Creciendo Juntos' mission is to empower mothers, fathers, and caregivers of children aged 0 to 4 by enhancing their skills and knowledge about child development, with a special emphasis on socio-emotional development, stress reduction, and the creation of positive relationships with their surroundings. The program promotes conscious, loving, and evidence-based parenting while facilitating access to community resources that support the holistic development of young children.

LEARN MORE



<https://bit.ly/CJparented>



### Petaluma Parent Nursery School Cooperative

9/2/25 – 12/19/25

Join our unique preschool community! A mixed-age school family with parents administering and facilitating alongside a credentialed teacher and a classroom aide!

We serve children from 2 years old until TK and have a 4:1 ratio of children to adults.

The learning environment is carefully curated with a focus on whole-child development and supporting families.

Parents attend engaging, bi-monthly, evening meetings focused on Positive Discipline, child development and growing a supportive community.

Partially funded by Petaluma Adult School, we remain affordable while providing a high-quality program. We also have a robust scholarship program.

Preschool hours: M, T, Th, F, 9-12 and W morning field trips!

***Please email or call us for more information and to get on our mailing list!***  
***[www.petalumaparentnurseryschool.org](http://www.petalumaparentnurseryschool.org) • 707-499-9193***



PETALUMA  
FAMILY  
RESOURCE  
CENTER  
At McDowell School

(707) 778-4697

The Petaluma Family Resource Center at McDowell School supports the Petaluma Community in countless ways. Visit our webpage at [petalumacityschools.org](http://petalumacityschools.org) for more information.



# PETALUMA ADULT SCHOOL

ENGLISH (ESL) AND CITIZENSHIP CLASSES

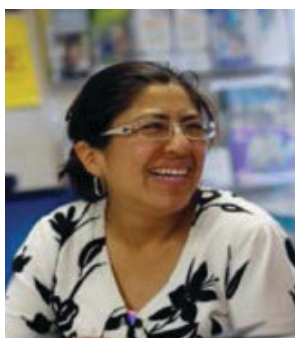
Clases de Inglés y Ciudadanía

**FALL / OTOÑO 2025**

MCDOWELL ELEMENTARY SCHOOL

421 S. MCDOWELL BLVD

## DAYTIME CLASSES / CLASES DEL DIA



**Level/Nivel 1** M, T, W & TH 9:00 - 11:30  
L, M, MI & J

**Level/Nivel 1** M, T, W & TH 12:15 - 2:45  
L, M, MI & J

*(no childcare for this class/no hay cuidado de niños para este clase)*

**Level/Nivel 2** M, T, W & TH 9:00 - 11:45  
**Level/Nivel 3** L, M, MI & J

**Level/Nivel 4** T & TH 9:00 - 11:45  
M & J

## EVENING CLASSES / CLASES EN LA TARDE

**Level/Nivel 1** T & TH  
**Level/Nivel 2** M & J 6:00 - 8:30  
**Level/Nivel 3**

**Citizenship/ Ciudadanía** W 6:30 - 8:30  
M

**Computers (Spanish)/ Computación (español)** M 6:00 - 8:30  
L



Free Classes! ¡Clases Gratis!  
Books (optional) Libros (opcional)  
\$20

Free Parking! ¡Estacionamiento  
Gratis!

Free Childcare! ¡Guarderia  
Gratis!

## CLASSES BEGIN AUGUST 25, 2025

Las clases empiezan el 25 de agosto 2025

FALL REGISTRATION BEGINS AUGUST 13 & 14

La inscripcion comienza el 13 & 14 de agosto

## WEEKLY REGISTRATION ON TUESDAYS

11:30-12:30 & 6:00-7:00pm

Inscripción semanal los martes

a las 11:30-12:30 y 6:00-7:00pm

NO APPOINTMENT NECESSARY

No es necesario hacer cita



# Official HiSET Exams



## Where/Dónde

McDowell Elementary School, Room/Salón B4

## When/Cúando

- Wednesdays at 3:45 and at 6:00  
Los miércoles a las 3:45 y a las 6:00
- 3 Saturdays at 8:30 and at 11:00  
Tres sábados a las 8:30 y a las 11:00

## What's Next? ¡Quiero empezar!

Get started with our HiSet prep classes!  
¡Inscríbete en nuestras clases de preparación!

## Petaluma Adult School Exam Dates 2025-2026

### 2025

8/27	10/1	10/29	12/3
9/10	10/8	11/5	12/10
9/17	10/15	11/15 (S)	12/13 (S)
9/24	10/22	11/19	12/17

### 2026

1/7	3/4	4/22	5/27
1/14	3/11	4/29	6/3
2/4	3/25	5/13	6/6 (S)
2/25	4/1	5/20	6/10

**NO FEES!** **¡SIN COSTO!**



## High School Equivalency at Petaluma Adult School



### Enroll in High School Equivalency (HSE) classes

1. **Register for HSD/HSE Orientation** (QR code on the right)
  - **Choose a date** from the options on the website and register for orientation.
2. **Orientation & CASAS** - All students must complete CASAS at the beginning of the year, end of the year, and if the student doesn't study for 90 days.



Students need to attend at least one class with a teacher every week either online or in person.

- 421 S McDowell Blvd, Petaluma (at the south end of the parking lot, near McGregor Ave.)

Monday	8:00-12:00	Tutoring & Check-ins	♦ McDowell B4, ♦ Zoom
	12:30-2:00	Open Lab	♦ McDowell B4
Tuesday	12:30-3:00	Open Lab	♦ McDowell B4
	4:00-6:30	Tutoring & Check-ins	♦ McDowell B4, ♦ Zoom
	6:30-8:00	Math & Open Lab	♦ McDowell B4, ♦ Zoom
Wednesday	8:00-12:00	Tutoring & Check-ins	♦ McDowell B4, ♦ Zoom
	12:30-2:00	Writing & Open Lab	♦ McDowell B4, ♦ Zoom
Thursday	12:30-3:00	Open Lab	♦ McDowell B4
	4:00-6:30	Tutoring & Check-ins	♦ McDowell B4, ♦ Zoom
	6:30-8:00	Open Lab	♦ McDowell B4



## Equivalencia de Preparatoria (HSE) en Español



### Inscripción para las clases de equivalencia de preparatoria (HSE)

1. **Formulario de inscripción** en línea (Escanea el código QR a la derecha.)
  - **Escoje una fecha** para asistir a la orientación en el formulario.
2. **Orientación y CASAS** - Tomar las pruebas CASAS es obligatorio para todos los estudiantes al principio del año, al final del año, y si no estudia durante 90 días.



Los estudiantes deben asistir al menos a una clase cada semana, ya sea en línea o en persona.

- 421 S McDowell Blvd, Petaluma (el extremo sur del estacionamiento, cerca de McGregor Ave.)

Lunes	8:00-12:00	Tutoría en todas materias	♦ McDowell B4, ♦ Zoom
	12:30-2:00	Estudios sociales y Estudio independiente	♦ McDowell B4, ♦ Zoom
Martes	12:30-3:00	Matemáticas y Estudio independiente	♦ McDowell B4, ♦ Zoom
	4:00-6:30	Tutoría en todas materias	♦ McDowell B4, ♦ Zoom
	6:30-8:00	Estudio independiente	♦ McDowell B4
Miércoles	8:00-12:00	Tutoría en todas materias	♦ McDowell B4, ♦ Zoom
	12:30-2:00	Escritura y Estudio independiente	♦ McDowell B4, ♦ Zoom
Jueves	12:30-3:00	Ciencias y Estudio independiente	♦ McDowell B4, ♦ Zoom
	4:00-6:30	Tutoría en todas materias	♦ McDowell B4, ♦ Zoom
	6:30-8:00	Matemáticas y Estudio independiente	♦ McDowell B4, ♦ Zoom



## FREE HIGH SCHOOL DIPLOMA • HiSET TEST PREP

**Students must be 18 or older and not currently attending high school to enroll in these free classes. You must attend an in-person orientation prior to attending class (register at [petalumaadultschool.org](http://petalumaadultschool.org)).**

Our programs provide an interactive, self-paced learning environment with highly qualified, caring teachers.

### HIGH SCHOOL DIPLOMA

Petaluma Adult School awards a high school diploma to students who complete all of the necessary graduation requirements. Credits from prior high schools, adult schools and community college coursework may be used to satisfy some of the credit requirements needed for a PAS high school diploma. Classes are self-paced and offered in a lab-style setting to accommodate adults' schedules.

#### McDowell Elementary School

421 S. McDowell Blvd., Petaluma, CA 94954  
M/W 9:00 am – 12:00 pm and 4:30 – 7:30 pm

#### Creekside High School

*Note our new address of 1150 Broadway (what was formerly Adele Harrison Middle School).*

1150 Broadway, Sonoma, CA 95476  
TH 4:00 – 6:30pm Room 302

#### Ridgway High School

325 Ridgway Avenue, Santa Rosa, CA 95401  
T/TH 4:00 – 7:00 pm Room 82

#### Windsor Oaks Academy

8681 Windsor Road, Windsor, CA 95492  
T 4:30 – 7:00 pm Room D106

DIPLOMA REQUIREMENTS	
English - 30	Government - 5
Algebra - 10	Economics - 5
Mathematics - 10	World Hist - 10
Life Science - 10	Arts / Lang / CTE - 10
Physical Sci - 10	Career Transitions - 5
US History - 10	Electives - 65
TOTAL: 180 CREDITS	



### HIGH SCHOOL EQUIVALENCY

High School Equivalency test preparation is available to students in a blended learning model. **Classes are offered in-person and virtually, mornings and evenings, in English and Spanish.** The morning in-person classes in Petaluma also offer free childcare. Please use the QR codes on page 12 to sign up for an orientation. You must attend an in-person orientation before going to class. Please call our office at 707-778-4633 if you have questions about the HiSET program or have trouble signing up for orientation.

*El programa de equivalencia de preparatoria brinda a los estudiantes preparación para los exámenes para completar con éxito los exámenes de equivalencia de preparatoria (HiSET). Petaluma Adult School también es un sitio de exámenes HiSET, lo que facilita la inscripción para los exámenes oficiales. Los estudiantes deben aprobar los 5 subexámenes para recibir un certificado de equivalencia de preparatoria del Estado de California. Utilice el código QR en la página 12 para inscribirse para una orientación.*

### Microsoft Office Certificate

This individualized, self-paced class via Zoom is an introduction to the MS Office applications Word, Excel, PowerPoint and Outlook. Students may choose to learn file management, how to design flyers and business documents, how to format and edit spreadsheets with charts, graphs and mathematical functions. Prerequisite: MS Office subscription and/or installed on your computer. Email Daniel Mikkola at [dmikkola@petk12.org](mailto:dmikkola@petk12.org) if you have questions on this class.

# 414102 \$50

TU 8/19 - 12/16 5:00-7:00pm

Online via Zoom

Scholarships are available to PAS diploma or equivalency students or graduates. Email Danny Kambur at [dkambur@petk12.org](mailto:dkambur@petk12.org) for more information.



Register online at [www.petalumaadultschool.org](http://www.petalumaadultschool.org)

Petaluma City Schools

**Superintendent**

Matthew Harris

**Board Members**

Mady Cloud, **President**

Caitlin Quinn, **Clerk**

Joanna Paun, **Member**

Ellen Webster, **Member**

Ryan Williams, **Member**

Ava Haghighi, **Student Member**

Olivia Leonard, **Student Member**

Daniel Vieira, **Student Member**



Petaluma Adult School

Michelle Devereaux

**Principal**

Danny Kambur

**Assistant Principal**

Erika Schiefer

**Office Manager**

Cindy Leupold

**Registrar**



**Vol. 26, No. 1**

The Petaluma Adult School class schedule is published twice a year.

Design: AVM Graphics

Printing: FolgerGraphics, Inc.

Start here. Go anywhere.





**PETALUMA CITY SCHOOLS**  
EST. 1873

OPENINGS IN GRADES TK-12

707-778-4813 | [petalumacityschools.org](https://petalumacityschools.org)



## Site Locations

### CGHS - Casa Grande HS

333 Casa Grande Road  
Petaluma, CA 94954

### CHS - Creekside HS

1150 Broadway  
Sonoma, CA 95476

### KJHS - Kenilworth Jr. HS

800 Riesling Road  
Petaluma, CA 94954

### MCD - McDowell School

421 S. McDowell Blvd.  
Computer Rms: B4, E1  
Petaluma, CA 94954

### MCK - McKinley School

110 Ellis Street  
Petaluma, CA 94954

### PJHS - Petaluma Junior HS

700 Bantam Way  
Petaluma, CA 94952

### PHS - Petaluma HS

201 Fair Street  
Petaluma, CA 94952

### PPNS - Petaluma Parent Nursery School

810 Madison Street  
Petaluma, CA 94952

### RHS - Ridgway HS

325 Ridgway Avenue  
Santa Rosa, CA 95401

### SAHS - San Antonio HS

500 Vallejo Street  
Petaluma, CA 94952

### VV - Valley Vista School

730 N. Webster Street  
Petaluma, CA 94952

### WOA - Windsor Oaks Academy

8681 Windsor Road  
Windsor, CA 95492

## SCHOOL POLICIES

**ACADEMIC COUNSELING:** Academic counseling is available for students.

**ADMISSION:** Adult School classes are open-entry/open-exit and available to any person 18 years of age or older who can benefit from instruction. Adult education classes are provided in Adults with Disabilities accessible settings. Ed Code #52610

**BOOKS:** Textbooks are available for purchase. Ed. Code #52612, 60410

**COMPLAINT PROCEDURE:** The Petaluma City School's Board of Education has established a policy that addresses complaints concerning school programs/personnel. For more information call 778-4633.

**CONSENT TO PHOTO:** Enrolling in any class/program with Petaluma Adult School grants the school express permission to use any/all photos taken for non-profit use. This use extends to media, websites, publications, flyers and any/all forms of advertising. If you do not wish to have your image used, please notify your teacher.

**EQUAL OPPORTUNITY:** Petaluma City Schools does not discriminate on the basis of race, color, national origin, mental or physical handicap, age or sex in any of its policies or procedures related to admission, employment, financial aid, educational services, programs or activities.

**FEES:** Community Education classes are supported solely by student fees. Some classes have additional lab/materials fees.

**REFUNDS:** Full refunds are given for classes canceled by PAS. If a student withdraws from a class prior to the start date, a refund will be processed. Refunds are not issued once class has begun.

**TOBACCO POLICY:** All locations are non-smoking facilities. Board policy 4172/4272 and 5131.62.

# Petaluma Adult School

200 Douglas Street, Petaluma, CA 94952



*“Our journey may have taken longer,  
but our stories are no less significant.  
We are here, we are ready, and we  
are prepared to make our mark on  
the world. ... sometimes, the most  
fulfilling chapters of life begin with  
a second chance.”*

—Noemi Zamora  
2025 High School Equivalency Graduate

\*\*\*\*\*ECRWSEDDM\*\*\*\*\*

Residential Customer

## LAP SWIM

### PETALUMA ADULT SCHOOL

**08.25** MONDAY, 5:30 A.M. - 7:00 A.M.  
8/18, 8/25, \$38

**09.25** MONDAY, 5:30 A.M. - 7:00 A.M.  
9/8, 9/15, 9/22, 9/29, \$56

**10.25** MONDAY, 5:30 A.M. - 7:00 A.M.  
10/6, 10/13, 10/20, 10/27, \$56

**11.25** MONDAY, 5:30 A.M. - 7:00 A.M.  
11/3, 11/10, 11/17, \$42

**12.25** MONDAY, 5:30 A.M. - 7:00 A.M.  
12/1, 12/8, 12/15, 12/29, \$56

PHS POOL, 201 FAIR STREET



Non-Profit Org.  
U.S. Postage  
**PAID**  
Petaluma, CA  
Permit #132